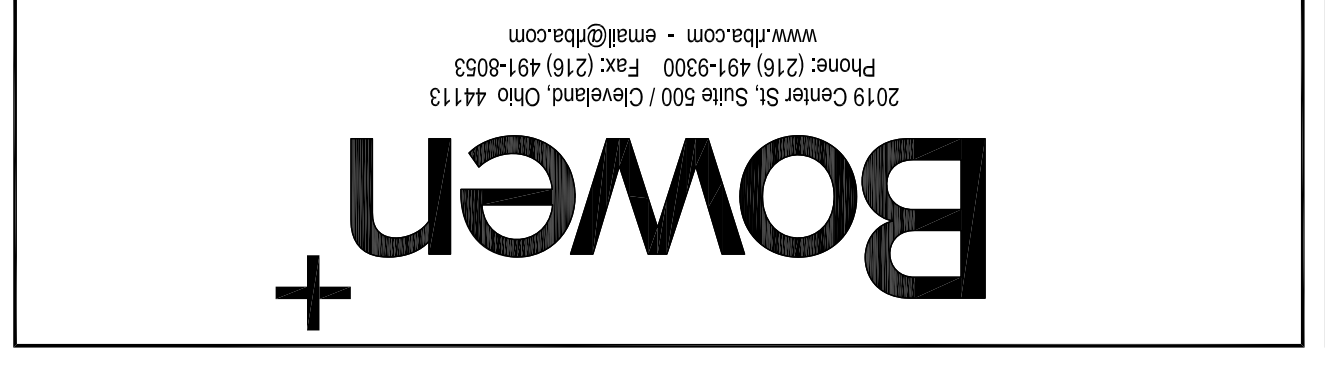


DATES AND REVISIONS	
No.	Date/Description
BD	08.19.20
APPENDIX 1	



NOTICE
THE ARCHITECT AND ENGINEER SHALL BE RESPONSIBLE FOR THE ACCURACY OF THE INFORMATION PROVIDED HEREON. THE CONTRACTOR SHALL VERIFY ALL INFORMATION AND CONDITIONS PRIOR TO CONSTRUCTION. ALL MATERIALS AND METHODS SHALL BE APPROVED BY THE ARCHITECT AND ENGINEER. © 2019 BOWEN+ ASSOCIATES, INC.

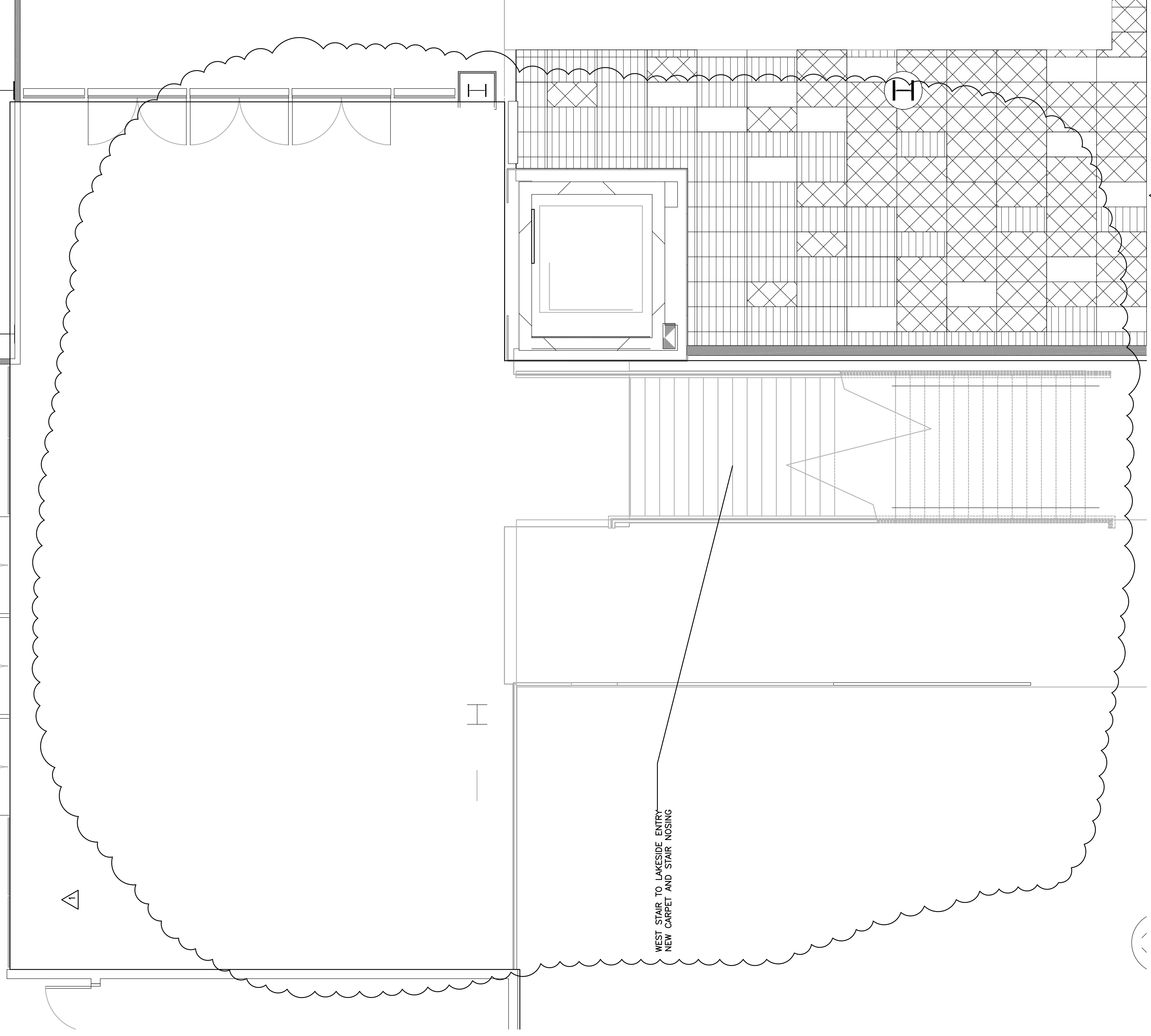
GLOBAL CENTER FOR HEALTH INNOVATION
1 ST CALIR AVE NE, CLEVELAND, OH 44114
CONCOURSE CARPET PLAN I

DRAWN BY: []
CHECKED BY: []
RLB NO.: 8832.48

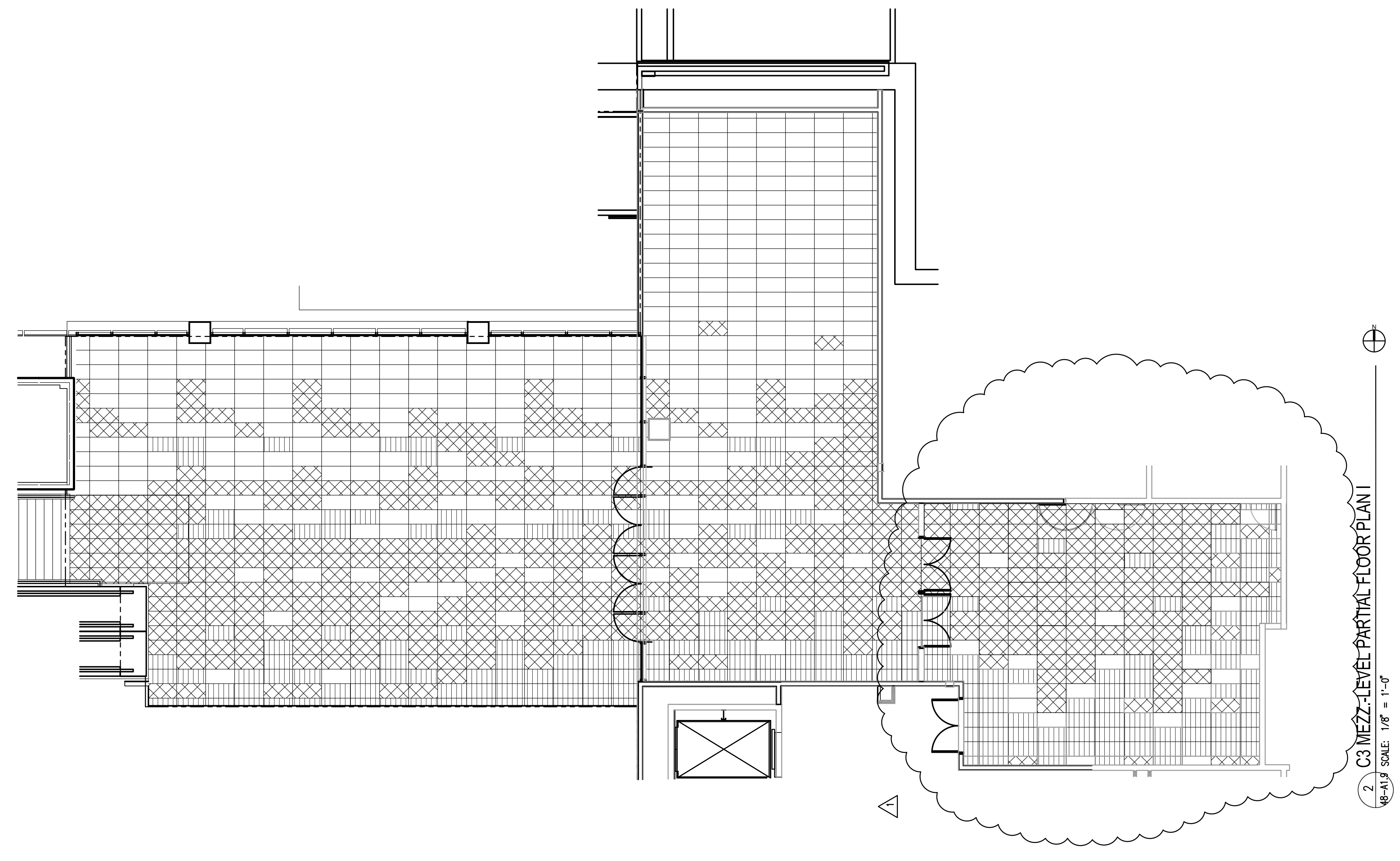
DRAWING NO. 48-A1.1

GENERAL NOTES

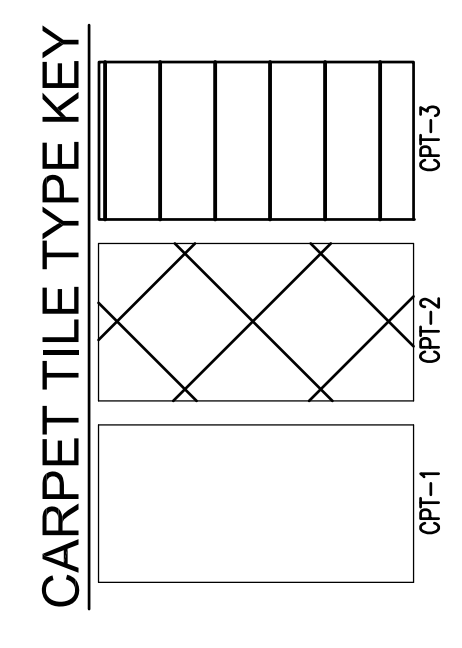
1. Repair any area where concrete slab has spalled to level surface prior to carpet installation. Verify with owner all locations



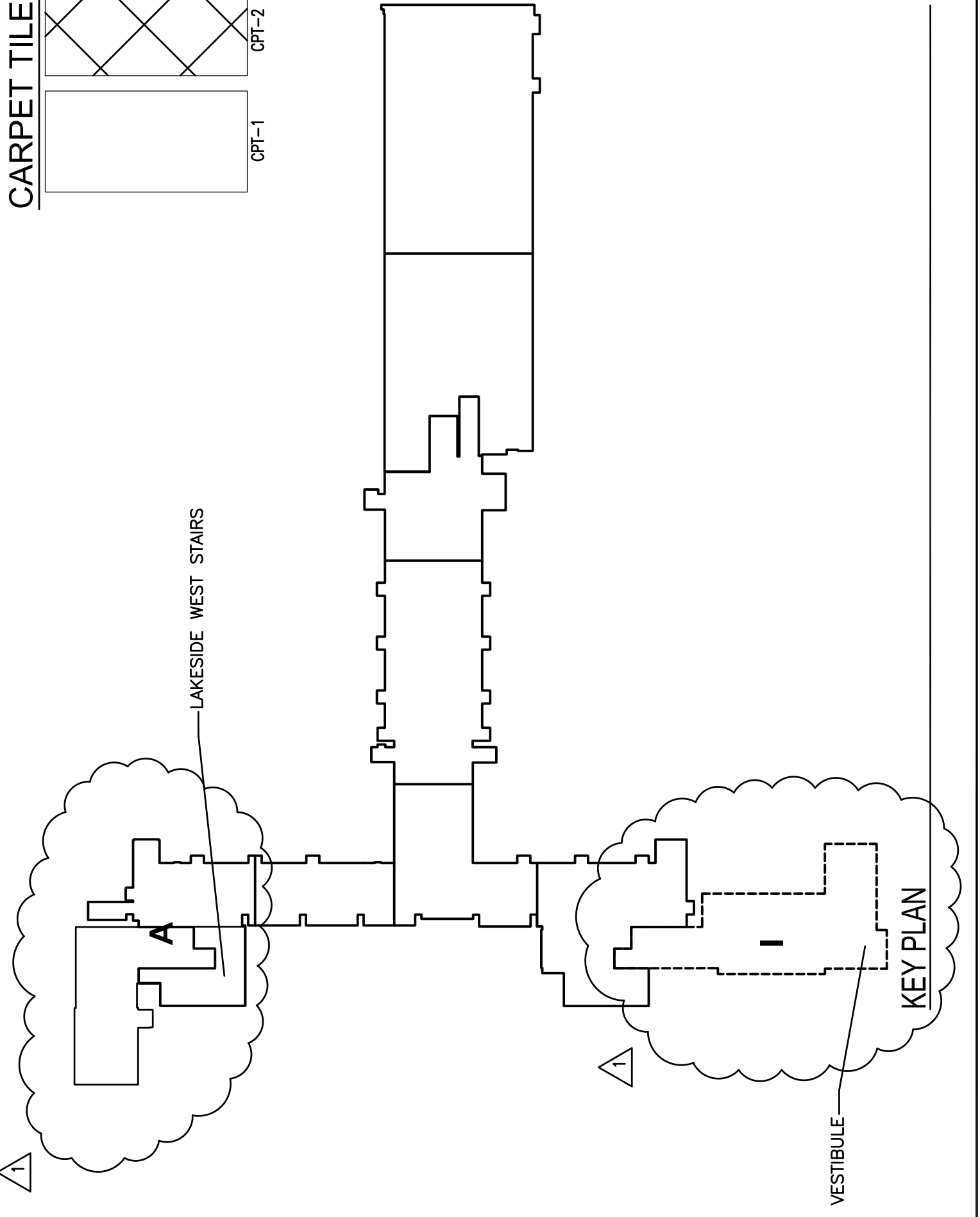
1 C3-LEVEL PARTIAL FLOOR PLAN A
48-A1.9 SCALE: 1/4" = 1'-0"



2 C3-MEZZ-LEVEL PARTIAL FLOOR PLAN I
48-A1.9 SCALE: 1/8" = 1'-0"



CARPET TILE TYPE KEY



PUBLIC AUDITORIUM VESTIBULE

KEY PLAN