

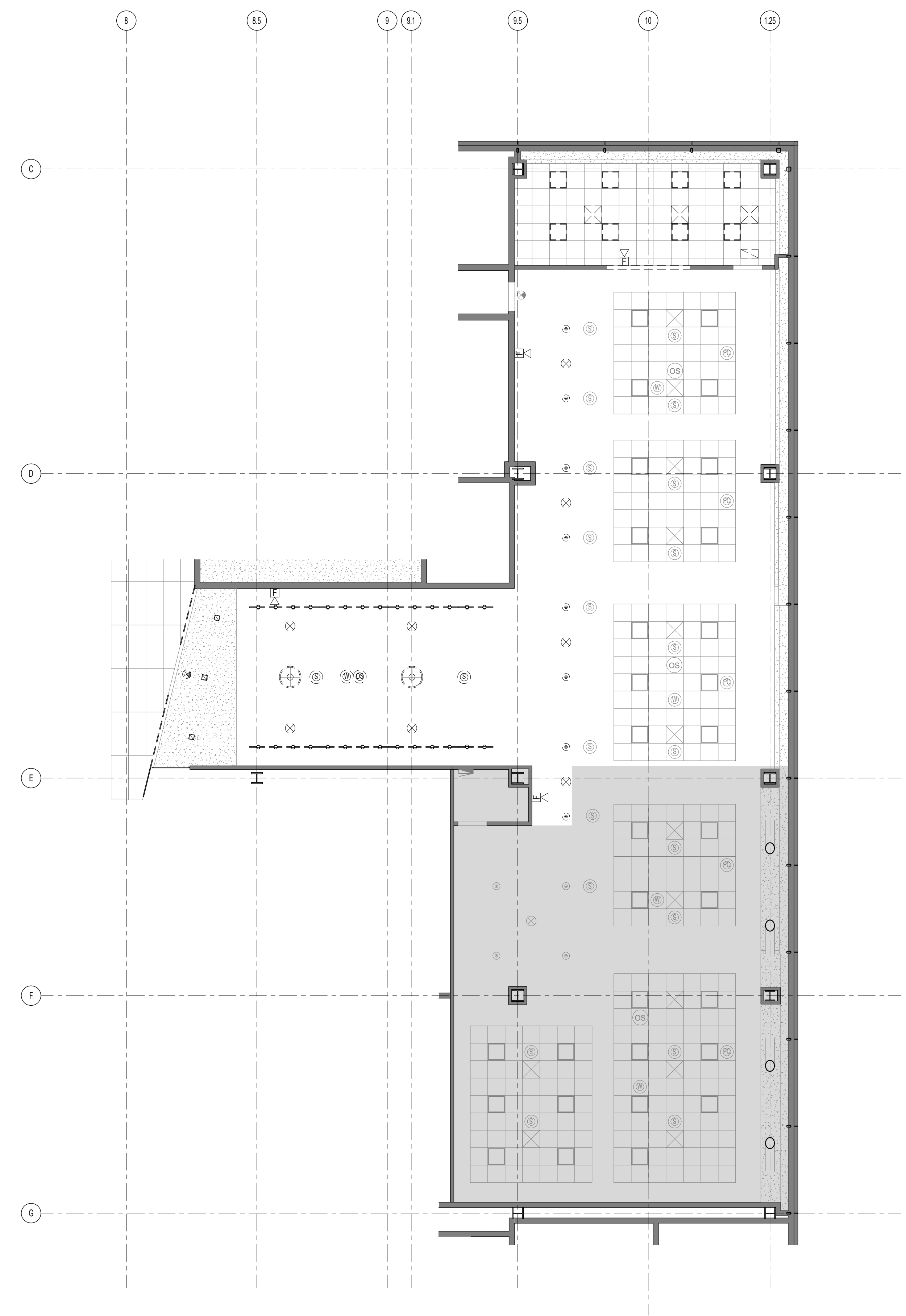
DATES AND REVISIONS	
No.	Date / Description
	19.05.29 BID/PERMIT SET
1	19.06.17 ADDENDUM 37-1



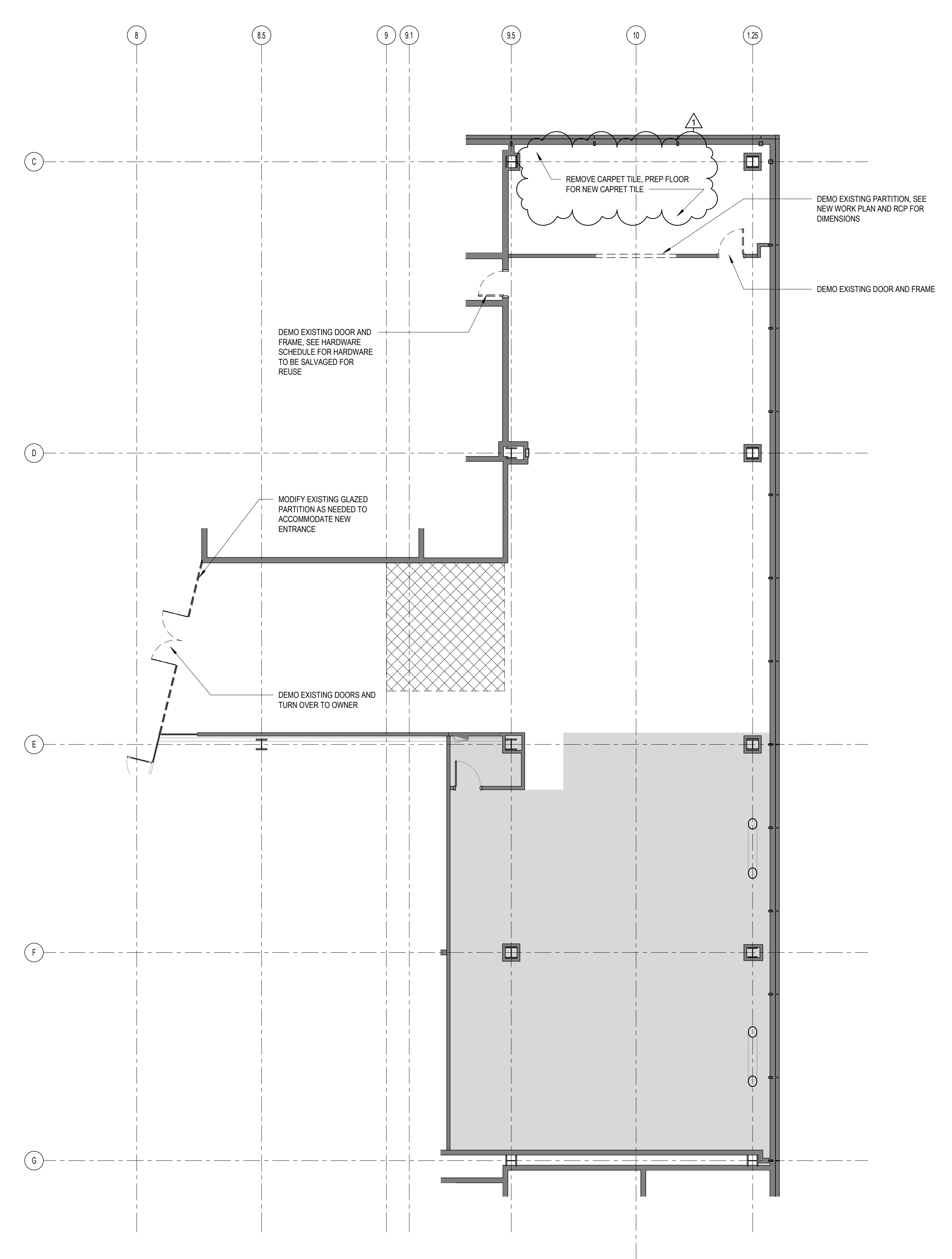
DEMO PLAN AND RCP LEGEND

- EXISTING COMPONENT TO REMAIN
- COMPONENT TO BE DEMOLISHED
- AREA NOT IN CONTRACT
- AREA OF EXISTING FLOOR FINISH AND BASE TRIM TO BE DEMOLISHED

NOTE:
SEE MEP DRAWINGS FOR ADDITIONAL INSTRUCTIONS.



2 SUITE 319/320 DEMO RCP
SCALE: 1/8" = 1'-0"



1 SUITE 319/320 DEMO PLAN
SCALE: 1/8" = 1'-0"

ARCHITECTS ENGINEERS + INTERIORS

RICHARD L. BOWEN + ASSOCIATES INC.

10000 Shaker Boulevard, Cleveland, Ohio 44120
Phone: 216.464.8833
www.rlb.com email@rlb.com

NOTICE

THIS ARCHITECTURAL AND ENGINEERING DRAWING IS GIVEN IN CONFIDENCE. NO USE OR DISSEMINATION MAY BE MADE WITHOUT PRIOR WRITTEN CONSENT OF THE ARCHITECT. ALL RIGHTS ARE HEREBY SPECIFICALLY RESERVED.
© 2017 RICHARD L. BOWEN + ASSOCIATES, INC.

GLOBAL CENTER FOR HEALTH INNOVATION
1 ST CLAIR AVE NE, CLEVELAND, OH 44114

DEMO FLOOR PLAN & RCP

DRAWN BY: Author
CHECKED BY: Checker
RLB NO: 8832

DRAWING NO.

37-AD01