

DATES AND REVISIONS	
No.	Date / Description
	19.05.29 BID/PERMIT SET



**RICHARD L. BOWEN + ASSOCIATES INC.**  
 ENGINEERS • ARCHITECTS • INTERIORS • CONTRACTORS  
 10000 Shaker Boulevard, Cleveland, Ohio 44120  
 Phone: 216.461.1000  
 Fax: 216.461.1005  
 www.rlb.com email:rlb@aia.com

**NOTICE**  
 THIS ARCHITECTURAL AND ENGINEERING DRAWING IS GIVEN IN CONFIDENCE. NO USE OR DISSEMINATION MAY BE MADE WITHOUT THE WRITTEN CONSENT OF THE ARCHITECT. ALL RIGHTS ARE HEREBY SPECIFICALLY RESERVED.  
 ©2017 RICHARD L. BOWEN + ASSOCIATES INC.

**GLOBAL CENTER FOR HEALTH INNOVATION**  
 1 ST CLAIR AVE NE, CLEVELAND, OH 44114  
 TPA STREAM FIT OUT  
 FLOOR PLAN & RCP

DRAWN BY: Author  
 CHECKED BY: Checker  
 RLB NO.: 8832

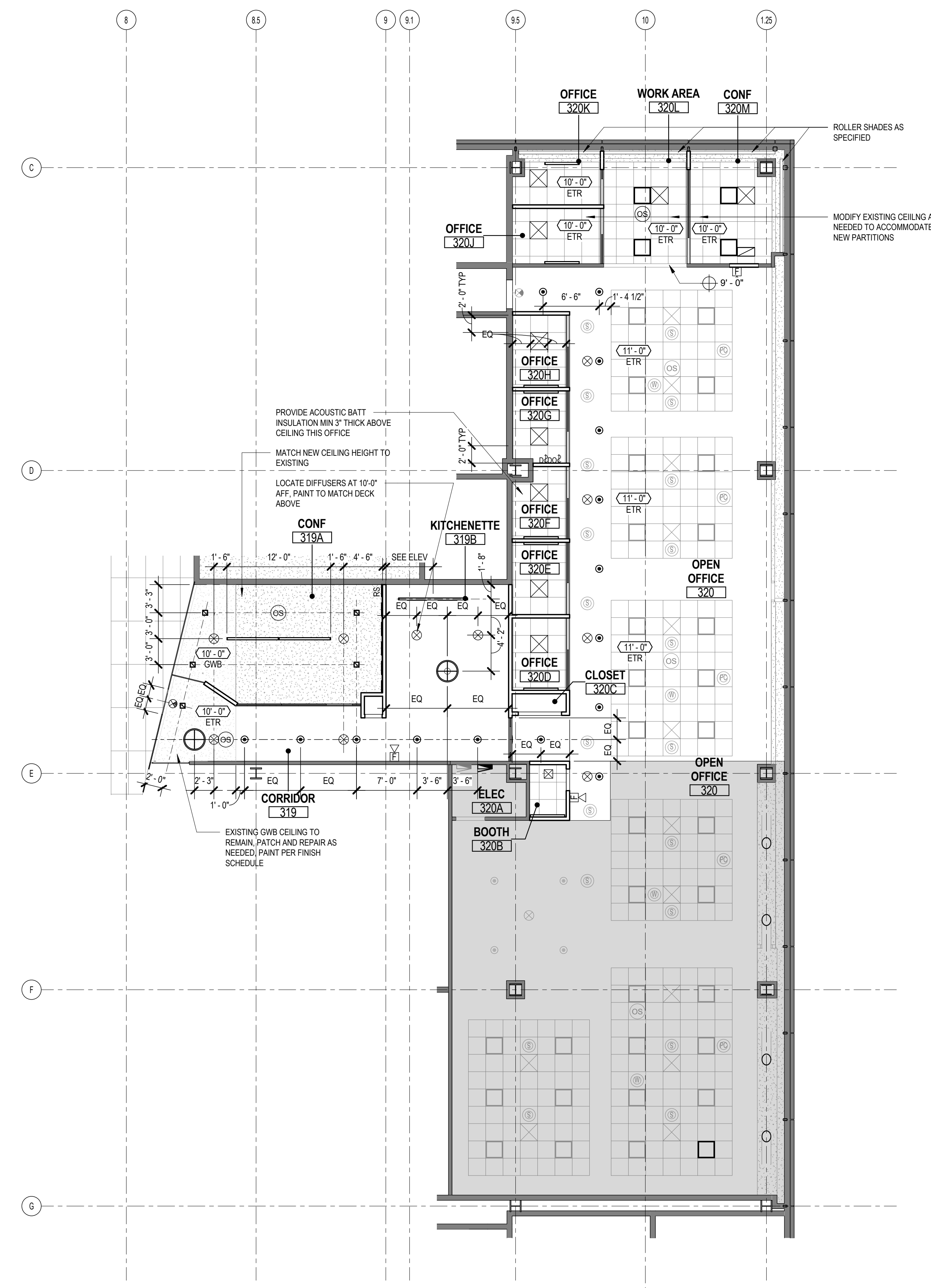
DRAWING NO.  
**37-A01**

**REFLECTED CEILING PLAN LEGEND**

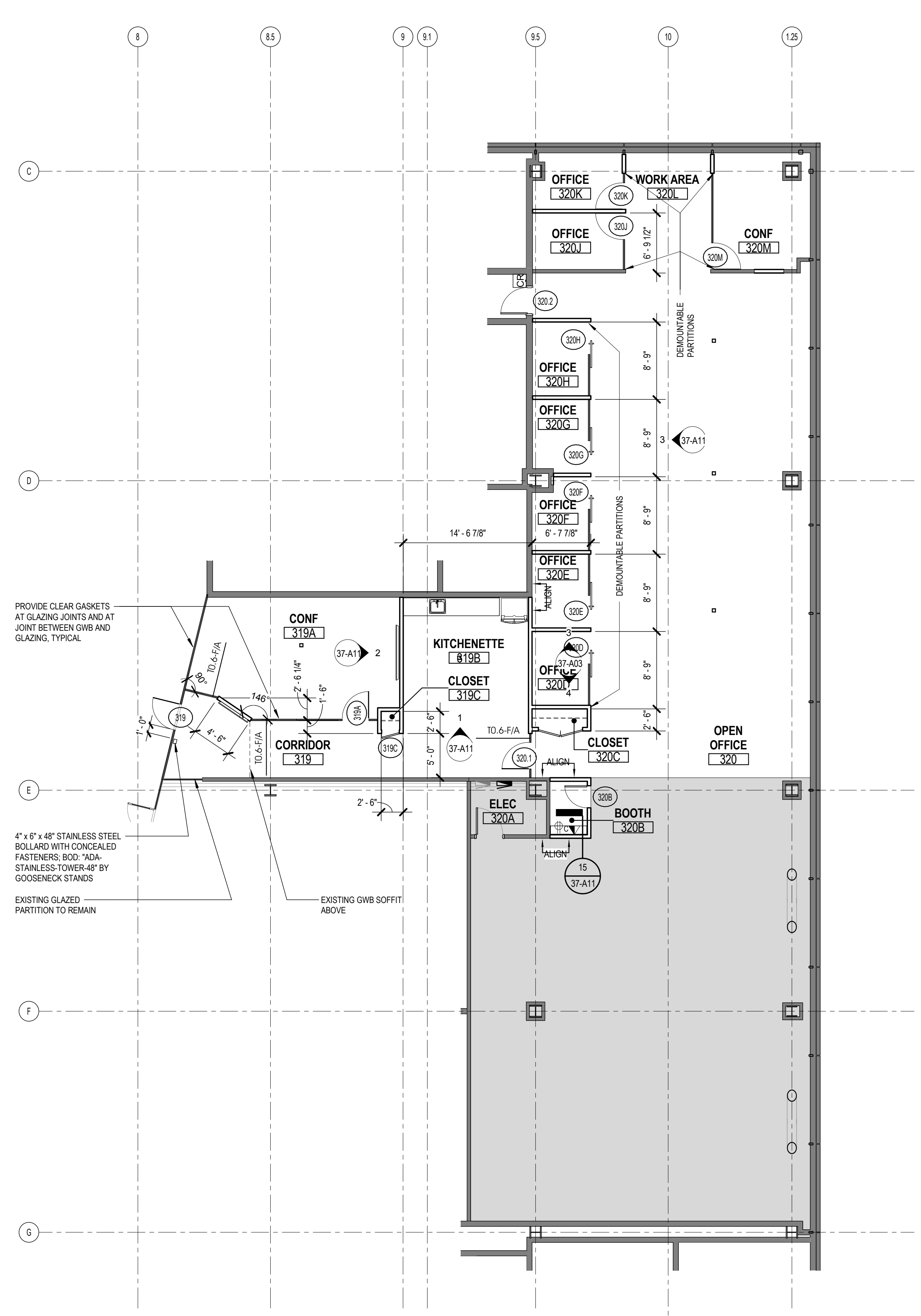
- |  |                                       |  |
|--|---------------------------------------|--|
| ACT-1 2x2 LAY-IN CEILING GRID  | SMOKE DETECTOR, SEE ELEC. DWGS.       | SUPPLY DIFFUSER, SEE MECH. DWGS.                           |
| GYPSUM BOARD CEILING ON METAL STUD   | EXIT SIGN, SEE ELEC. DWGS.            | RETURN DIFFUSER, SEE MECH. DWGS.                           |
| FINISH CEILING ELEVATION   | OCCUPANCY SENSOR, SEE ELEC. DWGS.     | ROUND SUPPLY DIFFUSER, SEE MECHANICAL DWGS.                |
| RECESSED DOWNLIGHT FIXTURE, SEE ELEC. DWGS.  | PHOTOCELL SENSOR, SEE ELEC. DWGS.     | AIR RETURN SLOT, SEE INTERIOR DETAILS AND MECHANICAL DWGS. |
| PENDANT MOUNTED LIGHT FIXTURE, SEE ELEC. DWGS.   | RECESSED ROUND SPEAKER                |  |
| 2x2 RECESSED TROFFER LIGHT FIXTURE   | CEILING-MOUNTED WIRELESS ACCESS POINT |  |
| PENDANT MOUNTED DECORATIVE LIGHT FIXTURE, SEE ELEC. DWGS. COORD. LOCATION WITH FURNITURE |                                       |  |

**FLOOR PLAN LEGEND**

- |                                    |                              |
|------------------------------------|------------------------------|
| NEW PARTITION, SEE PARTITION TYPES | EXISTING PARTITION TO REMAIN |
|------------------------------------|------------------------------|



**2 SUITE 319/320 RCP**  
 SCALE: 1/8" = 1'-0"



**1 SUITE 319/320 PLAN**  
 SCALE: 1/8" = 1'-0"

**GENERAL NOTES - PLANS**

- COLUMN BOX OUT PARTITIONS TO BE TYPE F-4-P, U.N.O.
- INTERIOR GWB PARTITIONS TO BE TYPE G5-F/A, U.N.O.
- INTERIOR GLAZED PARTITIONS TO BE TYPE T0.6-F/A, U.N.O.
- MINIMIZE FOOTPRINT OF BOX OUTS AROUND PIPES AND OTHER UTILITIES.
- WHERE INTERIOR GLASS PARTITION PANELS OR ALL-GLASS DOORS ARE BEING RELOCATED OR PROVIDED, MODIFY SHOE AND HEAD RAILS AS NECESSARY.
- PROVIDE SLAB OPENINGS AND PENETRATIONS AS REQUIRED TO ACCOMMODATE NEW MEP INSTALLATION. COORDINATE LOCATIONS WITH EXISTING MEP AND STRUCTURAL COMPONENTS.
- DEMOUNTABLE PARTITION SYSTEM TO BE FULL HEIGHT, WHERE PARTITION IS 9'-0" TALL OR UNDER, PROVIDE 3/8" T CLEAR GLASS BUTT JOINT FRONTS, WHERE PARTITION IS ABOVE 9'-0", PROVIDE 3/8" T CLEAR GLASS FRAMED JOINT FRONTS. PROVIDE FRAMING AND BLOCKING AT GWB FINISHED OPENING PER MFR REQUIREMENT. SUBMIT SHOP DRAWINGS FOR REVIEW.
- PROVIDE TYPE G5-F/A PARTITION ABOVE DEMOUNTABLE PARTITIONS, U.N.O.
- PROVIDE SHELF AND COAT ROD IN EACH CLOSET. SEE DETAIL 837-A11.
- PAINT EXISTING AND NEW PARTITIONS PER FINISH SCHEDULE.
- EXISTING FLOOR FINISH TO REMAIN, U.N.O. REMOVE FLOOR TILES AND RE-INSTALL AROUND NEW PARTITIONS AS NEEDED.
- EXISTING RESILIENT BASE TO REMAIN, U.N.O. PROVIDE SCHEDULED BASE TRIM AT NEW PARTITIONS.

**GENERAL NOTES - RCPs**

- PAINT EXISTING AND NEW GWB CEILING PER FINISH SCHEDULE.
- REPLACE DAMAGED EXISTING ACOUSTIC CEILING PANELS AS NEEDED.
- ROLLER SHADES TO BE MANUAL, MECH/SHADE, 1600 SERIES 1619 SILVER BIRCH, 3% OPEN, CONFORM SYSTEM AND FINISH MATCHES ROLLER SHADE IN ADJACENT AREA BEFORE ORDERING.
- MODIFY EXISTING FIRE PROTECTION SYSTEM AS NEEDED TO COORDINATE WITH REVISED FLOOR PLAN. CONTRACTOR TO SUBMIT PRODUCT INFORMATION AND SHOP DRAWINGS FOR AHJ'S REVIEW.

6/17/2019 4:28:25 PM C:\Users\rlb\OneDrive\Documents\3882 - Cleveland Medical Mart - 3882.rvt